

JCM INDUSTRIES

P. O. Box 1220, Nash, TX 75569-1220

Phone 800-527-8482 or 903-832-2581

Fax 800-874-9524 or 903-838-6260

www.jcmindustries.com

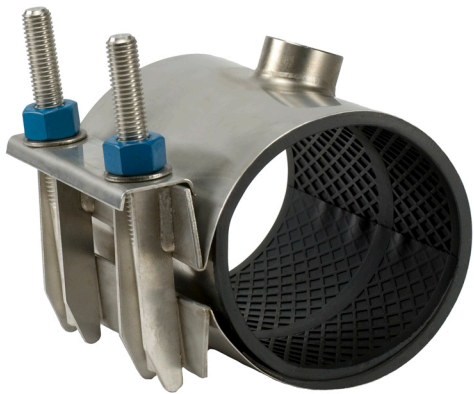
Typical Specification

JCM 163 Fabricated Lug Tapped Outlet All Stainless Steel Clamp Coupling

Full circumferential single band repair clamps shall have a minimum material standard of 304 stainless steel band, bolt assembly and hardware. Fabricated lug shall have permanently attached mutually supporting fingers and strong stainless steel lifter bar plate. The gasket shall be gridded with tapered lap joint ends and a 304 stainless steel bridge plate molded flush into the gasket. The stainless steel outlet shall be attached to the band by TIG weld process. Gaskets in sizes 3" and larger shall be 1/4" thick. Clamps shall be JCM 163 or approved equal.

JCM 100 Series Universal Clamp Couplings are ANSI/NSF Standard 61, Annex G and ANSI/NSF Standard 372 Certified.

JCM 100 Series Universal Clamp Couplings meet or exceed ANSI/AWWA C230 Standard for Stainless –Steel Full-Encirclement Repair and Service Connection Clamps as applicable.



JCM 163 Fabricated Lug Tapped Outlet All
Stainless Steel Clamp Coupling
Image reflects 6" width

This typical specification, provided by JCM Industries, is a proposed guideline for use by specifying agencies to ensure significant design and material features of this product are included within the agencies' individual specifications.



Effective 01.30.19

JCM INDUSTRIES

P. O. Box 1220, Nash, TX 75569-1220

Phone 800-527-8482 or 903-832-2581

Fax 800-874-9524 or 903-838-6260

www.jcmindustries.com

Material Specification

JCM 163 Fabricated Lug Tapped Outlet All Stainless Steel Clamp Coupling

Bolt Assembly: 18-8 Type 304 Stainless Steel

Band: 18-8 Type 304 Stainless Steel

Bolts and Nuts: 18-8 Type 304 Stainless Steel

Tapped Outlet: 18-8 Type 304 Stainless Steel

Gasket: Virgin Styrene-Butadiene Rubber (SBR) - Compounded for use with water, salt solutions, mild acids and bases. Per ASTM D-2000 M4AA 607. Standard temperature range from -40° to 150°F (-40° to 65°C) constant, maximum intermittent 180°F (82°C). For applications on high temperatures or chemical pipelines, contact JCM Industries Technical Services.

JCM 100 Series Universal Clamp Couplings are ANSI/NSF Standard 61, Annex G and ANSI/NSF Standard 372 Certified.

JCM 100 Series Universal Clamp Couplings meet or exceed ANSI/AWWA C230 Standard for Stainless –Steel Full-Encirclement Repair and Service Connection Clamps as applicable.

For ranges and widths, see JCM Industries General Product Directory Catalog.

Information based on data available at the date printed below and subject to change without notice. Contact JCM Industries for amendments or changes.

