

# JCM INDUSTRIES

P. O. Box 1220, Nash, TX 75569-1220

Phone 800-527-8482 or 903-832-2581

Fax 800-874-9524 or 903-838-6260

[www.jcmindustries.com](http://www.jcmindustries.com)

## Typical Specification

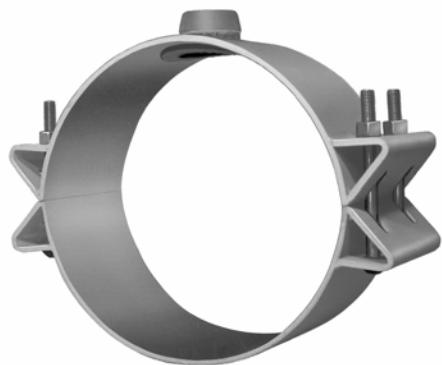
### JCM 438 Stainless Steel Threaded Outlet Tapping Sleeve

Service fittings shall be the high strength Stainless Steel 18-8 Type 304, which conforms to and supports the pipe. Sleeve shall be minimum 8" wide and be sized to fit and reinforce the pipe circumference. Sleeve outlet shall have a wide Buna-N gasket recessed in a machined groove around the threaded outlet. Service fitting shall be furnished with 18-8 stainless steel bolts, nuts and washers.

Service fittings shall be JCM 438 Stainless Steel Threaded Outlet Tapping Sleeve or approved equal.

JCM 400 Series Tapping Sleeves are ANSI/NSF Standard 61 & ANSI/NSF Standard 61 Annex G Certified.

JCM 400 Series Tapping Sleeves meet MSS-SP124 and ANSI/AWWA Standard C223 Fabricated Steel and Stainless Steel Tapping Sleeves as applicable.



JCM 438 Stainless Steel  
Threaded Outlet Tapping  
Sleeve

*This typical specification, provided by JCM Industries, is a proposed guideline for use by specifying agencies to ensure significant design and material features of this product are included within the agencies' individual specifications.*



# JCM INDUSTRIES

P. O. Box 1220, Nash, TX 75569-1220

Phone 800-527-8482 or 903-832-2581

Fax 800-874-9524 or 903-838-6260

[www.jcmindustries.com](http://www.jcmindustries.com)

## Material Specification

### JCM 438 Stainless Steel Threaded Outlet Tapping Sleeve

**Body:** Stainless Steel 18-8 Type 304.  
Optional 316 Stainless Steel available.

**Bolts:** Stainless Steel 18-8 Type 304.  
Optional 316 Stainless Steel available.

**Outlet:** 304 Stainless Steel.  
Optional 316 Stainless Steel available.

**Gasket:** Nitrile Butadiene Rubber (NBR, Buna-N) per ASTM D2000. Molded virgin rubber with a pressure activated hydro mechanical design. Gasket is bonded into a cavity for internal and external retention. Gasket temperature range -40°F to 212°F (-40°C - 100°C) Gasket suitable for water, salt solutions, mild acids, bases, and sewage.

**Service Rating:** 3/4" - 4" outlets: 250 PSI. Higher service rating available for specific applications and sizes

JCM 400 Series Tapping Sleeves are ANSI/NSF Standard 61 & ANSI/NSF Standard 61 Annex G Certified.  
JCM 400 Series Tapping Sleeves meet MSS-SP124 and ANSI/AWWA Standard C223 Fabricated Steel and Stainless Steel Tapping Sleeves as applicable.



Effective 09.20.10