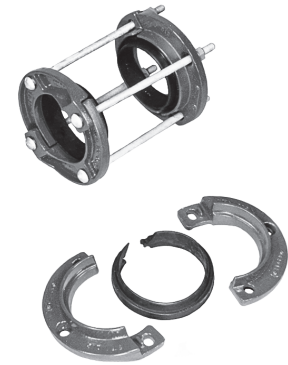


JCM 106 Bell Joint Leak Clamp

For quick repair or water tight joint assurance for rubber joint PVC pipe, solvent weld pipe or coupled pipe specify JCM 106 Bell Joint Leak Clamps. These clamps are engineered to provide a simple, dependable repair or assured joint. In addition, the JCM 106 eliminates possible notching of PVC pipe and offers maximum versatility and corrosion resistance.

For Repair of:

- PVC Rubber Joint Bells - Std. Steel Sizes (SDR 26, SDR 21)
- PVC Solvent Weld Joints and Couplings
- Std. Steel Threaded Couplings.



106 Bell Joint Leak Clamp

NOM. PIPE SIZE (IN.)	PIPE O.D. (IN.)	MAXIMUM BELL O.D. (IN.)	MAXIMUM LIP O.D. (IN.)	OVERALL LENGTH*	MAX. STD. CPLG. LENGTH	CATALOG NUMBER	APPR. WT. EACH (LBS.)
4	4.50	6.13	5.43	11-1/2	7	106-0450	12
6	6.63	8.25	7.56	11-1/2	7	106-0663	17
8	8.63	10.88	9.56	11-1/2	7	106-0863	21

*Dimension will change with use of studs.

JCM 143 Bell Joint Leak Clamps

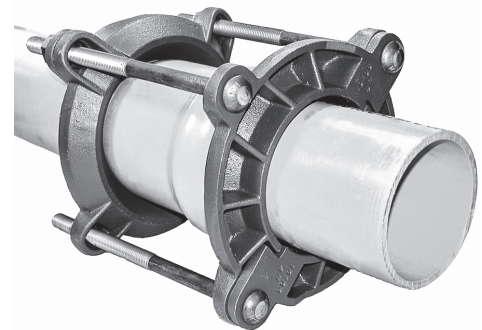
Pipe Sizes 4" - 12" Cast Iron Pipe, Ductile Iron Pipe, C-900 PVC

Strong - Split, interlocking rings provide maximum gasket compression. Heavy duty ductile iron components for the life of the pipeline.

Eliminates Extra Parts and Time Loss - Comes complete to repair cast iron, ductile iron and C-900 PVC in its nominal size without any special order bolts, gaskets or other parts. Simple transfer from shelf to job site to pipe joint without confusion.

Simple, Fast Installation - Split, interlocking rings and pre-cut gasket eliminates field cutting.

Install Under Pressure - Repair leaking joint or install as a leak preventative on older pipe joints that have been excavated or disturbed during other pipeline maintenance (a low-cost, long-term insurance policy).



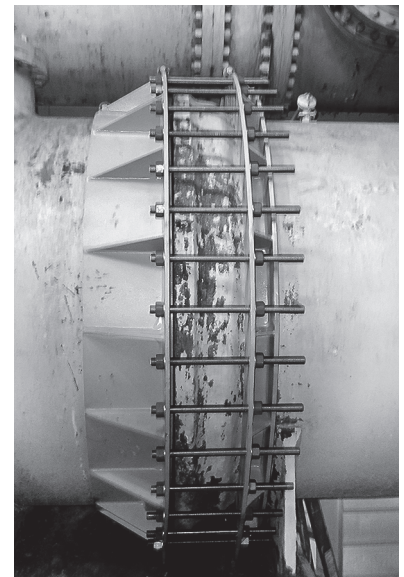
JCM 143 - 4" - 12"

Pipe Sizes 14" and Larger for Ductile Iron/Cast Iron Pipe

Fabricated Bell Joint Leak Clamps with split, bolt-on design provides a positive seal for large diameter Ductile Iron and Cast Iron leaking bells.

143 Bell Joint Leak Clamp - 4" - 36"

NOMINAL PIPE SIZE (IN.)	Clamp O.D. Range	CATALOG NUMBER	APPR. WT. EACH (LBS.)
4	4.80 - 5.00	143-0480	18
6	6.90 - 7.10	143-0690	27
8	9.05 - 9.30	143-0905	33
10	11.10 - 11.40	143-1110	43
12	13.20 - 13.50	143-1320	48
14	15.30	143-1530	125
16	17.40	143-1740	150
18	19.50	143-1950	175
20	21.60	143-2160	200
24	25.80	143-2580	325
30	32.00	143-3200	400
36	38.30	143-3830	600



JCM 143 - 14" - 36"

JCM 143 Bell Joint Leak Clamp 14" and Larger - fabricated steel. Standard Ductile Iron sizes listed. Optional oversize or undersized Cast Iron pipe O.D.s available. Large sizes available. Contact JCM Sales Team.