



# JCM Industries, Inc.

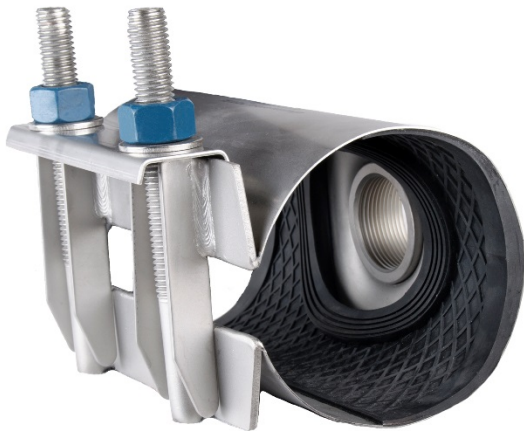
Pipe Fittings & Fabrications for Repair - Connection - Branching

## JCM 502 Stainless Steel Service Saddle Specification

Single band service saddle shall have a minimum material standard of 18-8 Type 304 stainless steel band, bolt assembly and hardware. Fabricated lug shall have permanently attached mutually supporting fingers and strong stainless steel lifter bar plate. Stainless steel studs, two (2) or three (3), shall be 5/8" and furnished with stainless steel washers to ensure proper torque readings. Stainless steel nuts will be coated with anti-seize coating to prevent galling. The gasket shall be EPDM material, gridded with raised outlet gasket with molded channels, and permanently adhered to the stainless steel band. Service saddle shall be minimum 8" in width. The stainless steel outlet shall be attached to the band by TIG weld process. Service saddle will be passivated per ASTM A380 with environmentally friendly process to return stainless to natural corrosion resistant state. Gaskets shall be tapered to maximum 1/4" thickness. Service saddles shall be JCM 502 or approved equal.

JCM 500 Series Service Saddles are ANSI/NSF Standard 61, Annex G and ANSI/NSF 371 Certified.

JCM 500 Series Service Saddles meet or exceed ANSI/AWWA C800 as applicable.





# JCM Industries, Inc.

Pipe Fittings & Fabrications for Repair - Connection - Branching

## JCM 502 Stainless Steel Service Saddle Material Specifications

**Band:** 18-8 Type 304 Stainless Steel, ASTM A240

**Outlet:** 18-8 Type 304 Stainless Steel Threaded Half Coupling

**Bolt Assembly:** 18-8 Type 304 Stainless Steel, ASTM A240

**Lift Bar:** 18-8 Type 304 Stainless Steel, ASTM A240

**Fasteners:** 18-8 Type 304 Stainless Steel

**Gasket:** EPDM - excellent resistance to aging factors including ozone, oxygen, elevated temperatures and fluctuations in weather. Recommended service for: hot water, steam and dry heat. Most popular application on chloramine. Suitable for other popular chemicals - ketones, alcohols, phosphate ester hydraulic fluids, glycols, dilute acids and alkalis. Maximum temperature 300°F wet. Not suitable for petroleum. For applications on high temperatures or chemical pipelines, contact JCM Industries Technical Services.

**Pressure:** JCM 502 Service Saddles are rated for 200 PSI working pressure, maximum 225 PSI test pressure. For higher pressure ratings, contact JCM Engineered and Technical Sales.

