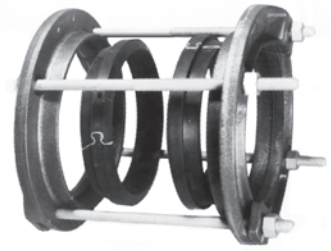


JCM Bell Joint Leak Clamps

JCM 106 Bell Joint Leak Clamps - For quick repair or water tight joint assurance for rubber joint PVC pipe, solvent weld pipe or coupled pipe specify JCM 106 Bell Joint Leak Clamps. These clamps are engineered to provide a simple, dependable repair or assured joint. In addition, the JCM 106 eliminates possible notching of PVC pipe and offers maximum versatility and corrosion resistance.



For Repair of:

- PVC Rubber Joint Bells - Std. Steel Sizes (SDR 26, SDR 21)
- PVC Solvent Weld Joints and Couplings
- Std. Steel Threaded Couplings.

106 BELL JOINT LEAK CLAMP

NOM. PIPE SIZE (IN.)	PIPE O.D. (IN.)	MAXIMUM BELL O.D. (IN.)	MAXIMUM LIP O.D. (IN.)	OVERALL LENGTH*	MAX. STD. CPLG. LENGTH	CATALOG NUMBER	PRICE EACH	APPR. WT. EACH (LBS.)
4	4.50	6.13	5.43	11-1/2	7	106-0450	\$ 255.00	12
6	6.63	8.25	7.56	11-1/2	7	106-0663	280.20	17
8	8.63	10.88	9.56	11-1/2	7	106-0863	387.40	21

*Dimension will change with use of studs.

JCM 143 Bell Joint Leak Clamp - 4" - 36"

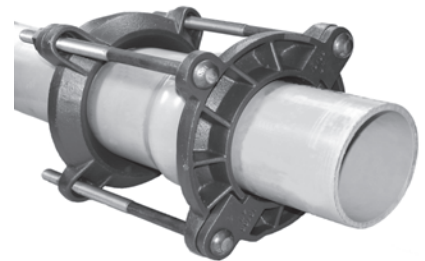
Pipe Sizes 4" - 12" Cast Iron Pipe, Ductile Iron Pipe, C-900 PVC

Strong - Split, interlocking rings provide a solid base for maximum gasket compression. Heavy duty ductile iron components for the life of the pipeline.

Eliminates Extra Parts and Time Loss - Each clamp comes complete to repair cast iron, ductile iron and C-900 PVC in its nominal size without any special order bolts, gaskets or other parts. Simple transfer from shelf to job site to pipe joint without confusion.

Simple, Fast Installation - Split-rings interlock around pipe and pre-cut gasket eliminates field cutting.

Install Under Pressure - Install under pressure to repair leaking joint or install as a leak preventative on older pipe joints that have been excavated or disturbed during other pipeline maintenance (a low-cost, long-term insurance policy).



JCM 143 - 4" - 12"

Pipe Sizes 14" and Larger for Ductile Iron/Cast Iron Pipe

Fabricated Bell Joint Leak Clamps with split, bolt-on designed provides a positive seal for large diameter Ductile Iron and Cast Iron leaking bells. Designed for long-term service and immediate delivery.

NOMINAL PIPE SIZE (IN.)	CLAMP O.D. RANGE (IN.)	CATALOG NUMBER	PRICE EACH	APPR. WT. EACH (LBS.)
4	4.80 - 5.00	143-0480	\$ 255.00	18
6	6.90 - 7.10	143-0690	281.40	27
8	9.05 - 9.30	143-0905	390.10	33
10	11.10 - 11.40	143-1110	525.20	43
12	13.20 - 13.50	143-1320	606.20	48
14	15.30	143-1530	2,182.60	125
16	17.40	143-1740	2,509.30	150
18	19.50	143-1950	2,697.50	175
20	21.60	143-2160	2,944.00	200
24	25.80	143-2580	3,446.70	325
30	32.00	143-3200	4,187.90	400
36	38.30	143-3830	5,221.00	600



JCM 143 - 14" - 72"
Larger sizes available

JCM 143 Bell Joint Leak Clamp 14" and Larger - Fabricated Steel

Sizes 14" and larger based on working ranges of industry standard pipe tolerances +/- To ensure exact fit when ordering provide specific bell/spigot outside diameters.

Larger Sizes Available, Contact JCM Sales Team 1-800-527-8482 or 903-832-2581.

