

INTRODUCING JCM 159 CAP SLEEVE FOR ABANDONED CORPORATION SERVICES

This sleeve quickly and efficiently installs over the abandoned corporation stop, permanently sealing the service area. This cap ensures a long term, watertight seal for the discarded corporation service and prevents any potential infiltration to the system.

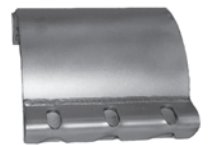
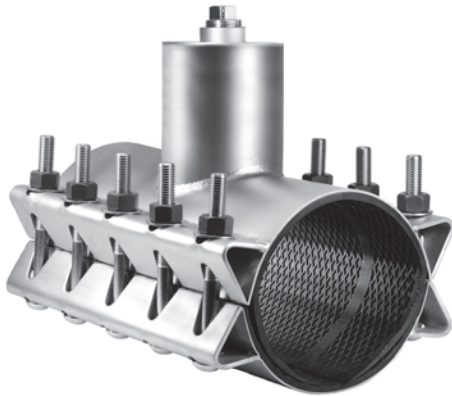
Available in standard pipe sizes and ranges and can be manufactured to fit unusual or exotic pipe diameters. Available in material options that best withstand the pipeline environment with gasket alternatives to accommodate the pipeline content.

JCM 159 Cap Sleeve is offered in three configurations to best serve the pipeline setting:

Type 1 - All Stainless Steel (304 or 316) with Full Circumferential Gasket

Type 2 - Carbon Steel (shopcoat or epoxy coat) with Outlet Seal Gasket

Type 3 - All Stainless Steel (304 or 316) with Outlet Seal Gasket



JCM 159 Type 1

JCM 159 Type 2 & 3

Type 1 All Stainless Steel (304) with Full Circumferential Gasket

| Nom Size | Pipe O.D. Range | Sleeve Number | Cap Size | Cap Height | Sleeve Width | List Price | Approx Wt. Ea. Lbs. |
|----------|-----------------|---------------|----------|------------|--------------|-------------|---------------------|
| 4 | 4.74 - 5.00 | 159-0480x3 T1 | 3.25" ID | 5.00" | 15 | \$ 1,420.00 | 38 |
| 6 | 6.83 - 7.16 | 159-0690x3 T1 | 3.25" ID | 5.00" | 15 | 1,434.00 | 42 |
| | 7.05 - 7.40 | 159-0720x3 T1 | 3.25" ID | 5.00" | 15 | 1,434.00 | 42 |
| 8 | 8.98 - 9.37 | 159-0905x3 T1 | 3.25" ID | 5.00" | 15 | 1,498.00 | 45 |
| | 9.27 - 9.69 | 159-0940x3 T1 | 3.25" ID | 5.00" | 15 | 1,498.00 | 45 |
| 10 | 11.00 - 11.40 | 159-1110x3 T1 | 3.25" ID | 5.00" | 15 | 1,708.00 | 47 |
| | 11.36 - 11.80 | 159-1140x3 T1 | 3.25" ID | 5.00" | 15 | 1,708.00 | 47 |
| 12 | 13.10 - 13.50 | 159-1320x3 T1 | 3.25" ID | 5.00" | 15 | 1,420.00 | 50 |
| | 13.70 - 14.09 | 159-1392x3 T1 | 3.25" ID | 5.00" | 15 | 1,929.00 | 50 |
| | 14.08 - 14.40 | 159-1420x3 T1 | 3.25" ID | 5.00" | 15 | 1,929.00 | 50 |

| | | | | | | | |
|----|---------------|---------------|----------|-------|----|-------------|----|
| 6 | 6.83 - 7.16 | 159-0690x6 T1 | 6.36" ID | 8.00" | 15 | \$ 1,478.00 | 49 |
| | 7.05 - 7.40 | 159-0720x6 T1 | 6.36" ID | 8.00" | 15 | 1,478.00 | 49 |
| 8 | 8.98 - 9.37 | 159-0905x6 T1 | 6.36" ID | 8.00" | 15 | 1,617.00 | 54 |
| | 9.27 - 9.69 | 159-0940x6 T1 | 6.36" ID | 8.00" | 15 | 1,617.00 | 54 |
| 10 | 11.00 - 11.40 | 159-1110x6 T1 | 6.36" ID | 8.00" | 15 | 1,850.00 | 58 |
| | 11.36 - 11.80 | 159-1140x6 T1 | 6.36" ID | 8.00" | 15 | 1,850.00 | 58 |
| 12 | 13.10 - 13.50 | 159-1320x6 T1 | 6.36" ID | 8.00" | 15 | 2,137.00 | 62 |
| | 13.70 - 14.09 | 159-1392x6 T1 | 6.36" ID | 8.00" | 15 | 2,137.00 | 62 |
| | 14.08 - 14.40 | 159-1420x6 T1 | 6.36" ID | 8.00" | 15 | 2,137.00 | 62 |

The JCM Cap Sleeve is rated for 250 PSI working pressure. For higher pressures, contact JCM Engineered and Technical Services Team.

Type 2 Carbon Steel with Outlet Seal Gasket

| Nom Size | Pipe O.D. Range | Sleeve Number | Cap Size | Cap Height | Sleeve Width | List Price | Approx Wt. Ea. Lbs. |
|----------|-----------------|---------------|----------|------------|--------------|------------|---------------------|
| 4 | 4.80 | 159-0480x3 T2 | 3.25" ID | 5.00" | 9 | \$ 643.00 | 29 |
| 6 | 6.83 - 7.16 | 159-0690x3 T2 | 3.25" ID | 5.00" | 12 | 686.00 | 50 |
| | 7.05 - 7.40 | 159-0720x3 T2 | 3.25" ID | 5.00" | 12 | 686.00 | 50 |
| 8 | 8.98 - 9.37 | 159-0905x3 T2 | 3.25" ID | 5.00" | 12 | 746.00 | 80 |
| | 9.27 - 9.69 | 159-0940x3 T2 | 3.25" ID | 5.00" | 12 | 746.00 | 80 |
| 10 | 11.03 - 11.47 | 159-1110x3 T2 | 3.25" ID | 5.00" | 12 | 778.00 | 90 |
| | 11.36 - 11.80 | 159-1140x3 T2 | 3.25" ID | 5.00" | 12 | 778.00 | 90 |
| 12 | 13.13 - 13.60 | 159-1320x3 T2 | 3.25" ID | 5.00" | 12 | 795.00 | 100 |
| | 13.60 - 14.09 | 159-1392x3 T2 | 3.25" ID | 5.00" | 12 | 795.00 | 100 |
| | 14.08 - 14.56 | 159-1420x3 T2 | 3.25" ID | 5.00" | 12 | 795.00 | 100 |

| | | | | | | | |
|----|---------------|---------------|----------|-------|----|-----------|-----|
| 6 | 6.83 - 7.16 | 159-0690x6 T2 | 6.36" ID | 8.00" | 12 | \$ 766.00 | 60 |
| | 7.05 - 7.40 | 159-0720x6 T2 | 6.36" ID | 8.00" | 12 | 766.00 | 60 |
| 8 | 8.98 - 9.37 | 159-0905x6 T2 | 6.36" ID | 8.00" | 12 | 788.00 | 80 |
| | 9.27 - 9.69 | 159-0940x6 T2 | 6.36" ID | 8.00" | 12 | 788.00 | 80 |
| 10 | 11.03 - 11.47 | 159-1110x6 T2 | 6.36" ID | 8.00" | 12 | 832.00 | 90 |
| | 11.36 - 11.80 | 159-1140x6 T2 | 6.36" ID | 8.00" | 12 | 832.00 | 90 |
| 12 | 13.13 - 13.60 | 159-1320x6 T2 | 6.36" ID | 8.00" | 12 | 867.00 | 120 |
| | 13.60 - 14.09 | 159-1392x6 T2 | 6.36" ID | 8.00" | 12 | 867.00 | 120 |
| | 14.08 - 14.56 | 159-1420x6 T2 | 6.36" ID | 8.00" | 12 | 867.00 | 120 |

Type 2 Fitting furnished shopcoat/alloy bolts. Epoxy coating and stainless steel hardware options available upon request.

Type 3 All Stainless Steel (304) with Outlet Seal Gasket

| Nom Size | Pipe O.D. Range | Sleeve Number | Cap Size | Cap Height | Sleeve Width | List Price | Approx Wt. Ea. Lbs. |
|----------|-----------------|---------------|----------|------------|--------------|-------------|---------------------|
| 4 | 4.80 | 159-0480x3 T3 | 3.25" ID | 5.00" | 9 | \$ 1,212.00 | 30 |
| 6 | 6.83 - 7.16 | 159-0690x3 T3 | 3.25" ID | 5.00" | 9 | 1,285.00 | 70 |
| | 7.05 - 7.40 | 159-0720x3 T3 | 3.25" ID | 5.00" | 9 | 1,285.00 | 70 |
| 8 | 8.98 - 9.37 | 159-0905x3 T3 | 3.25" ID | 5.00" | 9 | 1,391.00 | 82 |
| | 9.27 - 9.69 | 159-0940x3 T3 | 3.25" ID | 5.00" | 9 | 1,391.00 | 82 |
| 10 | 11.03 - 11.47 | 159-1110x3 T3 | 3.25" ID | 5.00" | 9 | 1,555.00 | 91 |
| | 11.36 - 11.80 | 159-1140x3 T3 | 3.25" ID | 5.00" | 9 | 1,555.00 | 91 |
| 12 | 13.13 - 13.60 | 159-1320x3 T3 | 3.25" ID | 5.00" | 9 | 1,576.00 | 98 |
| | 13.60 - 14.09 | 159-1392x3 T3 | 3.25" ID | 5.00" | 9 | 1,576.00 | 98 |
| | 14.08 - 14.56 | 159-1420x3 T3 | 3.25" ID | 5.00" | 9 | 1,576.00 | 98 |

| | | | | | | | |
|----|---------------|---------------|----------|-------|----|-------------|-----|
| 6 | 6.83 - 7.16 | 159-0690x6 T3 | 6.36" ID | 8.00" | 12 | \$ 1,484.00 | 82 |
| | 7.05 - 7.40 | 159-0720x6 T3 | 6.36" ID | 8.00" | 12 | 1,484.00 | 82 |
| 8 | 8.98 - 9.37 | 159-0905x6 T3 | 6.36" ID | 8.00" | 12 | 1,560.00 | 88 |
| | 9.27 - 9.69 | 159-0940x6 T3 | 6.36" ID | 8.00" | 12 | 1,560.00 | 88 |
| 10 | 11.03 - 11.47 | 159-1110x6 T3 | 6.36" ID | 8.00" | 12 | 1,672.00 | 94 |
| | 11.36 - 11.80 | 159-1140x6 T3 | 6.36" ID | 8.00" | 12 | 1,672.00 | 94 |
| 12 | 13.13 - 13.60 | 159-1320x6 T3 | 6.36" ID | 8.00" | 12 | 1,747.00 | 101 |
| | 13.60 - 14.09 | 159-1392x6 T3 | 6.36" ID | 8.00" | 12 | 1,747.00 | 101 |
| | 14.08 - 14.56 | 159-1420x6 T3 | 6.36" ID | 8.00" | 12 | 1,747.00 | 101 |

Sleeves furnished standard with 3/4" test port on cap.

Price List Effective October 22, 2018. Cancels all previous prices. Prices subject to change without notice.