



JCM Industries, Inc.

Pipe Fittings & Fabrications for Repair - Connection - Branching

JCM Model 159 Cap Sleeve for Abandoned Corporation Services

- Eliminate Valuable Water Loss at Discarded/Damaged Service Locations
- Prevent exposure of line content & possible contamination
- Protect the reliability the system by reinforcing potential weak points

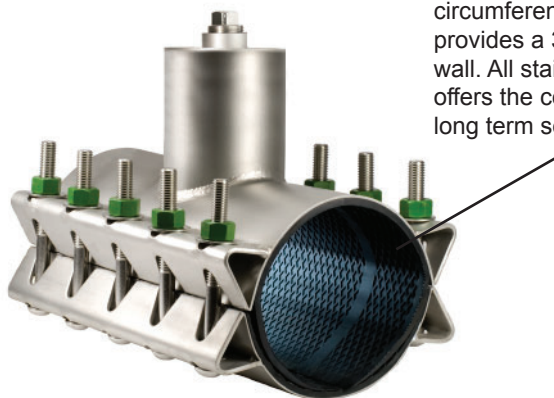
JCM Introduces the Model 159 Cap Sleeve for Abandoned Corporation Services. This sleeve quickly and efficiently installs over the abandoned corporation stop, permanently sealing the service area. This cap ensures a long term, watertight seal for the discarded corporation service and prevents any potential infiltration to the system.

Available in standard pipe sizes and ranges and can be manufactured to fit unusual or exotic pipe diameters. Available in material options that best withstand the pipeline environment with gasket alternatives to accommodate the pipeline content.

JCM 159 Cap Sleeve is offered in three configurations to best serve the pipeline setting:

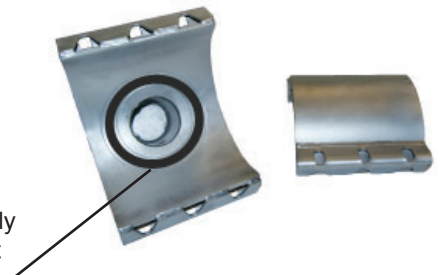
- Type 1 - All Stainless Steel (304 or 316) with Full Circumferential Gasket
- Type 2 - Carbon Steel (shopcoat or epoxy coat) with Outlet Seal Gasket
- Type 3 - All Stainless Steel (304 or 316) with Outlet Seal Gasket

The JCM Cap Sleeve is rated for 250 PSI working pressure. For higher pressures, contact JCM Engineered and Technical Services Team.



JCM 159 Type 1 offers a full circumferential gasket which provides a 360° seal on the pipe wall. All stainless steel construction offers the corrosion resistance for long term service.

JCM 159 Type 2 and Type 3 Feature an Outlet seal gasket is set in recessed gasket groove - trapping the gasket both internally and externally preventing gasket displacement and lowering the fitting profile on the pipe.



JCM Industries, Inc. / P. O. Box 1220 / Nash, TX 75569-1220

Call Toll Free 800-527-8482 or 903-832-2581

Fax Toll Free 800-874-9524 or 903-838-6260

www.jcmindustries.com

JCM 159 CAP SLEEVE FOR ABANDONED CORPORATION SERVICES

JCM Cap Sleeve ranges can be modified to accommodate unique or exotic pipe diameters. Sleeves are rated for 250 PSI working pressure. Higher working pressures available, contact JCM Engineered and Technical Sales Team.

How To Order:

Confirm dimensions of corporation stop to ensure the proper cap size and height. Fittings are non-returnable.

1. Determine O.D. of Pipe
2. Select proper sleeve range or provide O.D. to JCM
3. Select proper cap size/cap height to accommodate corporation stop.
4. Specify catalog number and Type # of sleeve.

Example: Sleeve with full circumferential gasket, for Ductile Iron Pipe with 9.05 O.D., order:

For standard gasket: 159-0905x3 T1
For EPDM gasket add: 159-0905x3 T1 EPDM

Standard fittings seal over 3/4" through 2" direct service connections. Other sizes available upon request.

JCM 159 Cap Sleeve Configuration Options:

- Type 1 (T1) All Stainless Steel 18-8 Type 304 with Full Circumferential Gasket
Optional Material: Stainless Steel 18-8 Type 316
- Type 2 (T2) Carbon Steel, corrosion resistant shopcoat primer
w/High Strength, Low Alloy Bolts ASTM 242/ANSI 21.11/AWWA C111
Optional Bolts: stainless steel 18-8 Type 304 or electro coated alloy (Powercron 590-534)
Optional Finish: fusion applied epoxy coating per ANSI/AWWA C213
- Type 3 (T3) All Stainless Steel 18-8 Type 304 with Outlet Seal Gasket (Type 3 or T3)
Optional Material: Stainless Steel 18-8 Type 316

Gasket: Type 1 - Full circumferential Virgin Styrene-Butadiene Rubber (SBR) - Compounded for use with water, salt solutions, mild acids and bases. Per ASTM D-2000 M4AA 607. Standard temperature range from -40° to 150°F (-40° to 65°C) constant, maximum intermittent 180°F (82°C). Optional Gasket: EPDM

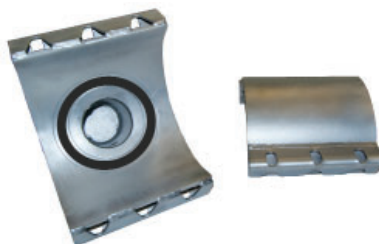
Type 2 & Type 3 - Nitrile Butadiene Rubber (NBR, Buna-N) per ASTM D2000. Molded virgin rubber with a pressure activated hydromechanical design. Gasket temperature range -40°F - 212°F (-40°C - 100°C). Gasket suitable for water, salt solutions, mild acids, bases and sewage.
Optional Gasket: EPDM

Sleeves provided standard with 3/4" test port on cap.

For applications on high temperatures or chemical pipelines, contact JCM Industries Engineered & Technical Sales Team



**JCM 159 Type 1
Full Circumferential Gasket**



**JCM 159 Type 2 & 3
Outlet Seal Gasket**

All JCM 159 Sleeves are furnished with 3/4" test port to ensure watertight seal after installation.



JCM 159 Cap Sleeve for Abandoned Corporation Services**Type 1 All Stainless Steel (304) with Full Circumferential Gasket**

Nom Size	Pipe O.D. Range	Sleeve Number	Cap Size (IN)	Cap Height (IN)	Sleeve Width (IN)	Approx. Wt. (Lbs.)
4	4.74 - 5.00	159-0480x3 T1	3.25" ID	5.00"	15	35
6	6.83 - 7.16	159-0690x3 T1	3.25" ID	5.00"	15	42
	7.05 - 7.40	159-0720x3 T1	3.25" ID	5.00"	15	42
8	8.98 - 9.37	159-0905x3 T1	3.25" ID	5.00"	15	45
	9.27 - 9.69	159-0940x3 T1	3.25" ID	5.00"	15	45
10	11.00 - 11.40	159-1110x3 T1	3.25" ID	5.00"	15	46
	11.36 - 11.80	159-1140x3 T1	3.25" ID	5.00"	15	46
12	13.10 - 13.50	159-1320x3 T1	3.25" ID	5.00"	15	47
	13.70 - 14.09	159-1392x3 T1	3.25" ID	5.00"	15	47
	14.08 - 14.40	159-1420x3 T1	3.25" ID	5.00"	15	47

6	6.83 - 7.16	159-0690x6 T1	6.36" ID	8.00"	15	49
	7.05 - 7.40	159-0720x6 T1	6.36" ID	8.00"	15	49
8	8.98 - 9.37	159-0905x6 T1	6.36" ID	8.00"	15	54
	9.27 - 9.69	159-0940x6 T1	6.36" ID	8.00"	15	54
10	11.00 - 11.40	159-1110x6 T1	6.36" ID	8.00"	15	60
	11.36 - 11.80	159-1140x6 T1	6.36" ID	8.00"	15	60
12	13.10 - 13.50	159-1320x6 T1	6.36" ID	8.00"	15	64
	13.70 - 14.09	159-1392x6 T1	6.36" ID	8.00"	15	64
	14.08 - 14.40	159-1420x6 T1	6.36" ID	8.00"	15	64

Type 3 All Stainless Steel (304) with Outlet Seal Gasket

Nom Size	Pipe O.D. Range	Sleeve Number	Cap Size (IN)	Cap Height (IN)	Sleeve Width (IN)	Approx. Wt. (Lbs.)
4	4.80	159-0480x3 T3	3.25" ID	5.00"	9	32
6	6.83 - 7.16	159-0690x3 T3	3.25" ID	5.00"	9	74
	7.05 - 7.40	159-0720x3 T3	3.25" ID	5.00"	9	74
8	8.98 - 9.37	159-0905x3 T3	3.25" ID	5.00"	9	83
	9.27 - 9.69	159-0940x3 T3	3.25" ID	5.00"	9	83
10	11.03 - 11.47	159-1110x3 T3	3.25" ID	5.00"	9	90
	11.36 - 11.80	159-1140x3 T3	3.25" ID	5.00"	9	90
12	13.13 - 13.60	159-1320x3 T3	3.25" ID	5.00"	9	98
	13.60 - 14.09	159-1392x3 T3	3.25" ID	5.00"	9	98
	14.08 - 14.56	159-1420x3 T3	3.25" ID	5.00"	9	98

6	6.83 - 7.16	159-0690x6 T3	6.36" ID	8.00"	12	82
	7.05 - 7.40	159-0720x6 T3	6.36" ID	8.00"	12	82
8	8.98 - 9.37	159-0905x6 T3	6.36" ID	8.00"	12	88
	9.27 - 9.69	159-0940x6 T3	6.36" ID	8.00"	12	88
10	11.03 - 11.47	159-1110x6 T3	6.36" ID	8.00"	12	96
	11.36 - 11.80	159-1140x6 T3	6.36" ID	8.00"	12	96
12	13.13 - 13.60	159-1320x6 T3	6.36" ID	8.00"	12	104
	13.60 - 14.09	159-1392x6 T3	6.36" ID	8.00"	12	104
	14.08 - 14.56	159-1420x6 T3	6.36" ID	8.00"	12	104

Dimensions shown in inches. Sleeves furnished standard with 3/4" test port on cap.

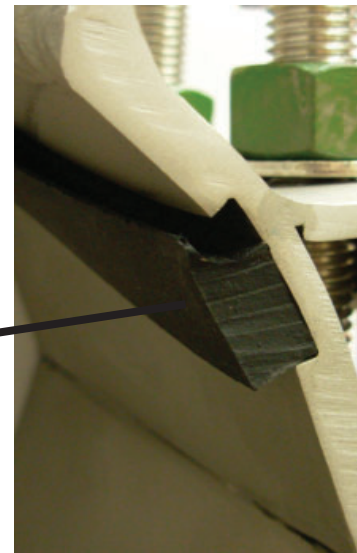
JCM 159 ABANDONED CORPORATION CAP SLEEVE Type 2

Type 2 Carbon Steel with Outlet Seal Gasket						
Nom Size	Pipe O.D. Range	Sleeve Number	Cap Size (IN)	Cap Height (IN)	Sleeve Width (IN)	Approx. Wt. (Lbs.)
4	4.80	159-0480x3 T2	3.07" ID	5.00"	9	30
6	6.83 - 7.16	159-0690x3 T2	3.07" ID	5.00"	12	50
	7.05 - 7.40	159-0720x3 T2	3.07" ID	5.00"	12	50
8	8.98 - 9.37	159-0905x3 T2	3.07" ID	5.00"	12	83
	9.27 - 9.69	159-0940x3 T2	3.07" ID	5.00"	12	83
10	11.03 - 11.47	159-1110x3 T2	3.07" ID	5.00"	12	90
	11.36 - 11.80	159-1140x3 T2	3.07" ID	5.00"	12	90
12	13.13 - 13.60	159-1320x3 T2	3.07" ID	5.00"	12	98
	13.60 - 14.09	159-1392x3 T2	3.07" ID	5.00"	12	98
	14.08 - 14.56	159-1420x3 T2	3.07" ID	5.00"	12	98

6	6.83 - 7.16	159-0690x6 T2	6.13" ID	8.00"	12	82
	7.05 - 7.40	159-0720x6 T2	6.13" ID	8.00"	12	82
8	8.98 - 9.37	159-0905x6 T2	6.13" ID	8.00"	12	88
	9.27 - 9.69	159-0940x6 T2	6.13" ID	8.00"	12	88
10	11.03 - 11.47	159-1110x6 T2	6.13" ID	8.00"	12	96
	11.36 - 11.80	159-1140x6 T2	6.13" ID	8.00"	12	96
12	13.13 - 13.60	159-1320x6 T2	6.13" ID	8.00"	12	104
	13.60 - 14.09	159-1392x6 T2	6.13" ID	8.00"	12	104
	14.08 - 14.56	159-1420x6 T2	6.13" ID	8.00"	12	104

Dimensions shown in inches. Sleeves furnished standard with 3/4" test port on cap.
Type 2 Fitting furnished shopcoat/alloy bolts. Other options available upon request.

JCM 159 Type 2 & Type 3 Outlet Seal Gaskets are set in a machined retaining groove that traps the gasket both internally and externally, lowering the profile of the sleeve on the pipe and eliminates gasket displacement.



JCM Industries, Inc. / P. O. Box 1220 / Nash, TX 75569-1220

Call Toll Free 800-527-8482 or 903-832-2581

Fax Toll Free 800-874-9524 or 903-838-6260

www.jcmindustries.com



JCM Bro - CS0524